



February 7, 2023

Volume 67, Issue 3

PHILIP-EYE

Rev. Dr. John W. Wurster
Pastor, Head of Staff

Rev. Keatan King
Associate Pastor

Rev. Omar Rouchon
Associate Pastor

Dr. Randall Swanson
Director of Music

Dr. Matthew Dirst
Organist

Cecy Duarte
Children's Music Associate

Micah Meyers
Art Director

Wilbert Parada
Facilities Supervisor

Dimas Parada
Custodian

Denise Ferrell
Bookkeeper

Lorrie Castle
Office Manager
Newsletter Editor

Susan Estill
Editor Emerita

ANNUAL MEETING

The Session has called the annual meeting of the congregation for **February 12**, immediately following the 11:00 a.m. worship service. The docket for the meeting includes a review of the 2022 annual report, presentation of the approved 2023 budget, consideration of changes to the pastors' terms of call, and the election of a trustee and at-large members of the congregational nominating committee. John van Osdall is being nominated to serve a three-year term as trustee. Selena Brinegar and Mickey Meyers are being nominated to serve two-year terms on the nominating committee. Additional nominees for these positions may be made from the floor during the meeting with prior consent of those being nominated.

LENT AT ST. PHILIP

The season of Lent begins with Ash Wednesday on **February 22**. Ash Wednesday services will be at 12 noon and 6:30 p.m. Lunch will be available in the Gathering Area following the noon service. The noon service will be live-streamed.

For all the Wednesdays in March, we will have midweek services at 12 noon, in-person and livestreamed. Guest preachers from across the area will lead us in worship. This year's theme is "How Can I Keep from Singing?" Each preacher is selecting a favorite hymn, connecting it to a scripture passage, and then preparing a sermon. Lunch will be available after the service in the Gathering Area.

Again this Lent, John Wurster will offer daily e-votions. These brief biblical reflections are sent each morning via e-mail. If you have received e-votions in the past, you are already subscribed for this year. If you'd like to join the e-votions list, send an e-mail to john@saintphilip.net.

WORSHIP SCHEDULE CHANGING

Beginning on **February 26** and continuing at least through the season of Lent, there will be a single Sunday worship service at 11:00 a.m. During these weeks, as the Session considers the longer term viability of the 9:00 a.m. service, your comments are welcome and appreciated.

MAKE VALENTINE'S DAY SWEET WITH FAIR-TRADE TREATS

Valentine's Day is a fun time to show your love for your community, the environment, and the farmers who grow our food. Did you know that through the PC(USA)'s fair-trade partner, Equal Exchange, St. Philip offers *ten* organic chocolate bars, from milk to mint to orange to "Total Eclipse" (*extremely* dark), and every one is so good! We also offer chocolate chips for baking if you prefer to make your own treats for your sweetie, and hot cocoa (and coffee and tea, if you prefer!) if you want to snuggle up together with a warm cup of comfort.

Americans will spend about \$2 billion on candy this year! Using fair trade, organic chocolate from Equal Exchange will show your loved ones that not only do you care deeply about them, you also care about the economic opportunity your purchases make possible for the chocolate farmer partners from the Bocas del Toro province of Panama too. A fair-trade Valentine's Day helps alleviate poverty, and farmers who are able to sell their produce under fair-trade terms are much less likely to leave their farms and migrate elsewhere.

Look for our table in the Gathering Area Sunday, **February 12**, from 9:30 a.m. to 11:00 a.m. and 12:00 to 12:30 p.m.

SECOND SUNDAYS

You are invited to join our church family for a time on intergenerational learning and fellowship at Second Sundays. On **February 12**, we will celebrate Valentine's Day with a Moravian lovefeast (hot chocolate and rolls) and crafting cards for our homebound. Come join us at **9:45 a.m. in the Gathering Area** - all are welcome.

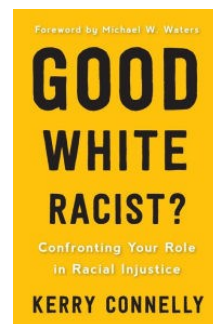
WATCH THE BIG GAME!

Young Adults and Young Families are invited to the home of Walker and Jessie Fair Sunday, **February 12** at 5:00 p.m. Bring a snack and/or beverage to share! Email welcome@saintphilip.net for address or look in MyStPhilip.

DUERR LECTURE SERIES—Save the dates for the 26th annual DUERR LECTURE SERIES, **February 26, 27, and 28, 2023**. Speaker for the series will be Dr. Rachel Baard, Assistant Professor of Theology and Ethics and Director of the Master of Arts in Public Theology Program at Union Presbyterian Seminary, Richmond, VA. Topic for the lectures is "Who is Jesus Christ for us Today?" Dr. Baard will preach for the morning worship service, 11:00 a.m., and present lectures each evening at 7:00 p.m. Lectures are available in person or by live-stream. Check the web page for more information: www.saintphilip.net.

SOCIAL JUSTICE STUDY GROUP

Everyone is welcome to the continuing meetings of the social justice study group! Our next meeting is **TO-NIGHT**, from 7:00 to 8:00 pm. Join your fellow St. Philippians for our continuing discussion of *Good White Racist?* (by Kerry Connelly). We gather by Zoom and will be covering chapters 8 and 9. (Outlines and action items follow below.) To receive information about the group, just email welcome@saintphilip.net with *PSJ* in the subject line.



Chapters 8, "Unequal justice (Or Liberty and justice for ~~all~~ white people and white people only)"

The police

The courts

The prison system

Learn: Is there a for-profit prison in your state? Is there a prison reform bill on the table? What does it say? Become an informed citizen. While you're at it, be sure to do an internet search for the list of companies that are using prison labor.

Think: Who benefits from mass incarceration, the prison-industrial complex, and the convict-leasing program?

Act: Write to the companies you discover use prison labor and express your desire for them to invest the savings they receive from that into post-prison reentry programs for the prisoners released from the facilities with which they have contracts.

Chapter 9, "The consumption of bodies (Or "Step away from the hair")

Because everything is ours

The doctrine of dominion

You're cool because of your Black friend

On friends and comrades

Learn: Research some of the historically Black neighborhoods in your area. Can you identify times in their history that they were consumed by whiteness?

Think: Have you ever used products, enjoyed entertainment, or embraced fashion choices that appropriate the cultures of BIPoC communities? Have you ever used a relationship with a member of the BIPoC community to justify yourself or to absolve yourself of racism?

Act: When interacting with a person of color, don't assume relationality. This could mean assuming that someone feels safe with you before knowing you, wants relationship with you just because that's what you want, or knows you're an ally before you've acted like one. Wait to be invited into relationship and understand that trust needs to be earned.

BROWN BAG LUNCH—Join Dr. Rachel Baard for the informal Brown Bag Lunch on Monday, **February 27**, at Noon in the Dining Room. This is a great opportunity to get to know the speaker and ask questions about any subject. Bring your own lunch, drinks are provided. The tables will be arranged in a large open square so there can be comfortable conversation. The lunch concludes at 1:00 p.m.

PRIMETIMERS

Join the Primetimers on **Thursday, March 30**, for a visit to the George H.W. Bush Presidential Library and Museum in College Station, for a tour of *Mandela: The Official Exhibition*. From the museum website: *Mandela: The Official Exhibition is the major new global exhibition that explores the life of one of the world's most famous freedom fighters and political leaders. The epic story of Nelson Mandela is told in a series of experiential galleries from his rural childhood home through years of turbulent struggle against the apartheid regime, to his eventual vindication and final years as South Africa's first democratically elected president.*

We will depart from the church parking lot at 8:30 and will be back by 3:30. After visiting the museum, we'll have lunch at Stella Southern Cafe. The cost is \$8/person and lunch will be on your own. **Please RSVP by Monday, March 6** to secure your spot. Payment can be made with cash the day of or online at Saintphilip.net under contributions choose 'Primetimers' fund. You may contact Omar with any questions.

WEEKLY OPPORTUNITIES

MIDWEEK BIBLE STUDY—Wednesday Bible study with John Wurster **meets weekly**. The class meets at 9:30 a.m., and is a hybrid format with an in-person option in the Office Conference Room and also a Zoom option. To get on the list for the Zoom links, send a note to john@saintphilip.net. Bible novices, Bible experts, and everyone in between is welcome!

WOMEN'S MONTHLY BOOK CLUB—This self-led, interactive group produces lively discussions and wonderful fellowship. The next meeting is **February 9** we will discuss *Girls and Sex: Navigating the Complicated New Landscape* by Peggy Orenstein. Watch your email for details of the next meeting. If you have any questions or concerns, please contact Nina Lambright at:

nnl@lambrightlaw.com.

PRESBYTERIAN MEN'S WEEKLY FELLOWSHIP

Men of all ages are welcome to participate in this self-led group. The Men's Weekly Fellowship meets each Friday **in person in the office conference room and via Zoom at 11:45 a.m.** If you would like to join them, please contact Gary Gardner at: ggardne148@aol.com.

LAMBETH STUDY—Keatan King leads young adults in study every Monday evening at 7:00 p.m. via Zoom. It is a time of study, reflection, and prayer. If you would like more details, email Keatan King at:

keatan@saintphilip.net.

PRESBYTERIAN WOMEN BIBLE STUDY—All women of the church are invited to join any of the meetings of Presbyterian Women. If you are not a member of a circle, you are welcome to participate; to be directed to a group leader please email welcome@saintphilip.net. All circles meet in the Dining Room in the Administration Building.

Monday Morning Saints—Second Monday of each month @10 a.m.

Sunday Circle—Third Sunday of each month @ 12:30 p.m.

Thursday Evening Circle—First Thursday of each month @ 7 p.m.

SEAFARERS 2022

Thanks for all you - as a member of our congregation - donated to the SeaFarers Christmas Boxes this year. We were able to pack 140 boxes - an all time high - each with a knitted hat or a ball cap. Since many of you have been collecting items for us all year for the past 25 or so years here is a heads up for you.

THIS year 8,944 boxes were delivered from 179 congregations and groups. There were 42 Presbyterian churches who donated 2146 boxes. Collectively we did a great job. Working together is always a great idea.

In preparing for 2023 please **DO NOT PURCHASE DEODORANT SOAP** for the boxes as the collective smell of thousands of boxes at the SeaFarers Center - overwhelms the people who work there... So please purchase soap without an enhanced odor to them.

In celebration of your caring,

Sue Shirley-Howard and Jane Cooper

invite you for lunch

on **March 1 at 11:45 a.m.**

at The Hallmark, 4718 Hallmark Drive.

There are several caveats for attending.

The rules:

- 1 - you must RSVP by **February 27** by texting or calling 713-683-8139 (Sue Shirley-Howard).
- 2 - you have knitted at least one hat for the Seafarers over the years.
- 3 - you have thought about knitting a hat for the Seafarers by purchasing a new one (no time like the present - we can store it for you).
- 4 - you donated yarn to the Arts & Crafts room over the years which our knitters have used for the hats.
- 5 - you have helped organize the drive-by delivery.
- 6 - you are available to arrive by 11:45 a.m. on Wednesday, **March 1**, with your driver's license.
- 7 - there is a limited number of seats so the earlier you RSVP assures you a place.
- 8 - lunch will be over at 1:00 p.m.

We wish to thank everyone especially
Jennifer Wilson, Hope Wilmarth,
Caryn and Russell Bahruth.

ST. PHILIP VBS ~ LENT 2023

WALKING TOGETHER



VACATION BIBLE SCHOOL

ALL CHILDREN AGES 3 - 5TH GRADE ARE WELCOMED > **THERE IS NO COST**

ST. PHILIP PRESBYTERIAN CHURCH - 4807 SAN FELIPE - EDUCATION BLDG.

&

WEAR CLOSED-TOE SHOES



* PLEASE BRING A BAGGED LUNCH

FEBRUARY

SATURDAY
9 AM - 2 PM

25TH

MO-RANCH RETREAT—JUNE 1-4

Registration for the annual Mo-Ranch Retreat (June 1-4) is open, please click on the link below to register.

Join us for a long weekend of fellowship at Mo-Ranch in the beautiful Texas Hill Country, where we'll pray, play, and relax together as a church family. This year's event begins after supper on Thursday (must purchase dinner in advance during registration) and continues through worship on Sunday morning.

Our featured speaker is Rev. Gini Norris-Lane. A gifted and creative speaker and teacher, Gini is engaged with Presbyterian campus ministry across the country as the executive director of UKirk. She also serves as pastor at First Presbyterian Church in Uvalde. Gini was a pastoral intern at St. Philip in the late 1990's.

MO-RANCH—Registration for the annual Mo-Ranch Retreat on June 1-4 is available in the Gathering Area after worship service today or you can visit: saintphilip.net

You may pay in full at the time of registration or in three installments (February 24, March 31, April 28). Confirmations and bills will be sent out by email. (Please be sure that the email you provide is correct and is an address you check regularly.) All registrations must be complete and paid by February 24, 2023. (First payment, if paying in installments.) No refunds can be made after March 31. If you do not cancel your reservation by that date, you must pay for your room whether you go or not.

WE REGRET WE CANNOT HOLD SPACE FOR ANYONE WITHOUT A COMPLETED REGISTRATION.

PRICING:

Pricing for a room in Wynne, Flato, or Pheasant Run lodge depends on how many adults will share the room. Prices for adults include lodging and all meals from breakfast Friday through breakfast Sunday. Children and youth are billed only for their meals (but must be accompanied by at least one adult per room).

If you wish to have Thursday dinner at Mo-Ranch, you must select that separately. Cost: Adults and Youth \$17; Children (ages 4-11) \$12.

WYNNE LODGE/FLATO LODGE

(each room has two queen beds)

Adult (single accommodation): \$528

Adult (room shared by 2 adults): \$310 each

Adult (room shared by 3 adults): \$238 each

Adult (room shared by 4 adults): \$201 each

Youth 12-18 in same room: \$93 per child

Children 4-11: \$68 per child



PHEASANT RUN

(most rooms have two beds)

Adult (single accommodation): \$498

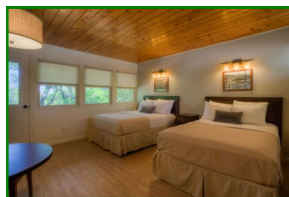
Adult (room shared by 2 adults): \$295 each

Adult (room shared by 3 adults): \$228 each

Adult (room shared by 4 adults): \$194 each

Youth 12-18 in same room: \$93 per child

Children 4-11: \$68 per child



PAYMENT:

At the end of the online registration process, you will be asked to *select payment amount*: Pay total amount; Pay minimum Payment; or Enter an Amount. Enter what you are able to pay at this time. The next option is to *select payment method*.

If you are setting up a payment plan, you will choose the option to Pay In Person/Mail.—Indicate Payments Plan in the memo box. You may then make payments in the office or sign in to MyStPhilip and make payments to the Mo-Ranch Fund on February 24, March 31, and April 28.

Click here to reserve your spot:

MO-Ranch Registration

Never been and would like to know more, committee members will be in the Gathering Area Sunday before and after the 11:00 a.m. worship service.

Committee members planning an adventure for you at Mo-Ranch include: Melissa Aldrich, Deb Burks, Ada Fuller, Judith Hiott, John Lemen, Ruthie Waldrop, and Amye Webster.

OPPORTUNITIES FOR LEARNING

NURSERY CARE IS AVAILABLE THROUGHOUT SUNDAY MORNINGS

8:30 a.m.—12:30 p.m. Infants to age 4 are invited to our Nursery which is staffed by professional childcare providers. Please find our Nursery in Room 106 of the Education Building along the Sunday School Classroom hallway on the first floor. An usher or a greeter will be happy to direct you there.

SUNDAY SCHOOL CLASSES FOR ALL AGES

GODLY PLAY (Age 3-Kindergarten) – Room 104—Our preschool class uses a curriculum called “Godly Play,” developed by Jerome Berryman in Houston, and utilized in reformed churches all over the world. Godly Play encourages children to use the language of Christians and multiple senses to express what they innately know about God.

ELEMENTARY (Grades 1-5) — Room 105

YOUTH (Grades 6-12) — Room 205

Both the Elementary and Youth classes use the PCUSA’s new *Follow Me* curriculum. These lessons are based on 36 practices that Jesus engaged in and taught his followers about. Learners will locate these practices in scripture, while engaging in conversation about the practices in their daily lives. With a wide variety of developmentally-aligned activities, conversation starters, and questions to ponder outside of class, this curriculum calls us all to follow Jesus and live out his example every day.

JOHN’S BIBLE CLASS—What are the best parts of the Bible? The best story? The best character? The best surprise? The best scoundrel? John Wurster leads this highly subjective exploration of biblical treasures. The class meets Sunday mornings at 9:45 a.m. in Room 202 in the Education Building and continues through February. The same topics will be considered during the midweek Zoom Bible study. Everyone is welcome: Bible novices and veterans and all those in between.

SPa (St. Philip Adults) – Room 200—This year, SPa returns to its same place and time. We use the adult resources from the new *Follow Me* curriculum to guide our informal weekly discussion about biblical practices such as hospitality, forgiveness and honoring sabbath. All adults of any age are welcomed to participate - grab some coffee and join us. There is no need to prepare or purchase materials for class, so come as you are able!

ADULT BIBLE STUDY—Room 204—We are continuing our study of the Kingdoms of Israel and Judah in 2 Kings with the story of Elisha and the fate of Jezebel in Dr. Robert Alter’s *Ancient Israel, The Former Prophets* (2013). Join us from **9:30 a.m. – 10:40 a.m.** to deepen our understanding of God’s faithfulness to God’s people from Dr. Alter’s translation and commentary on the Biblical Hebrew. All are welcome.

CHURCH & SOCIETY – Room 201—Church and Society regularly features speakers and presentations on a variety of contemporary and historical matters of faith and practice. This class meets from 9:40 a.m.-10:45 a.m. with presentations in person and some by Zoom, projected in the classroom. Email Mickey Meyers if you would like to join any of the classes: churchsociety_stphilip@comcast.net.

February 12 - This past August, breaking news revealed a major crisis in Texas youth prisons, with an inhumane environment for incarcerated children. The Texas Juvenile Justice Department (TJJD), an agency that’s always been plagued with problems, was at a point of collapse. The Texas Center for Justice & Equity has three major demands: 1. Shut down TJJD’s five state secure institutions by 2027 through a thoughtful, staggered closure plan. 2. Invest in building communities’ infrastructure to appropriately address the needs of children who have been sent to TJJD, and allow recapture from closed facilities to reimburse the costs for community-based resources. 3. Enact policy reforms that decriminalize youth, diverting children from the criminal punishment system altogether. Presented by Jay Jenkins, JD - Harris County Project Attorney - Texas Center for Justice & Equality. **February 19**, Kids Count Data: Challenges and Opportunities - Critical informative data on children’s well-being with economic, education, health, and family and community indicators. Presented by Dr. Ruena Wood - Adjunct Professor, University of Houston and former Contributor to the annual Kids Count Data Report, Orange County, CA.

CHILDREN’S CHAPEL In the Children’s Chapel, our young disciples learn the whos, whats, wheres, whens and whys of worship in the chapel, while also praying, seeing and hearing God’s word at an age-appropriate level. Children return to join the congregation in the first few pews on the lectern side of the church for the last hymn. This will resume on **February 12** and continues every 2nd and 4th Sunday during the 11 o’clock service.



PUT AN END TO PERIOD POVERTY AND THE STIGMA THAT SURROUNDS PERIODS

Saturday, March 4, 11:00 a.m. - 1:00 p.m.
Dining Room at St. Philip

Please join Caroline Vestal, member of St. Philip and Junior at Bellaire High School, for her Girl Scout Gold Award Event.

Through a fun event, Caroline is addressing period poverty, which refers to the inadequate access to menstrual education and hygiene products, including but not limited to sanitary products and waste management. The cost of sanitary products as well as access to affordable products leads to exclusion for girls from so many activities ranging from playing sports to attending school (this occurs in many areas of our country as well as many 3rd world countries). Research also shows that in communities shaped by repressive systems, as well as our own community, menstruating is too often viewed as an uncomfortable subject that comes with shame and embarrassment. Through education and advocacy she is hoping to help improve access to these hygiene products and show the world that periods are not only a natural process that all women and girls in the world share, but also important to humanity.

The event will be held here at the church on Saturday, March 4 from 11 am - 1 pm. The event will include more information about the topic as well as the 2 organizations she is supporting (**Star of Hope Homeless Shelter & www.lightingthepath.org/services/girls-for-girls-project**). There will be opportunities to sew reusable pads, cut fabric to prepare DIY sew packs to make reusable pads at home, make cute bracelets for awareness, watch a short film about this global issue, and enjoy light snacks and drinks!

All are welcome! (Yes, guys too!) Pre-teen and teen girls are highly encouraged to attend. Bring your friends and neighbors! **Registration is available online at: <https://www.signupgenius.com/go/60B0A4DAFAA2FAAF49-putanend>**



The construction cost estimate for the Katy/West Campus is \$20 Million. As of December 31, Amazing Place has reached \$12,600,000 towards that complete goal. The goal is to raise at least \$14 Million (75%) before construction starts. If anyone would like to discuss what Amazing Place does? The Construction plans? Or would like a tour of the Drexel campus to see how Amazing Place is impacting our community close to St. Philip, please contact Pam Keever at pkeever@atctx.com or 713-995-8200. Pam is starting her 4th year on the Board as St. Philip's representative. She is on the Nominating Committee and part of the Executive Committee.



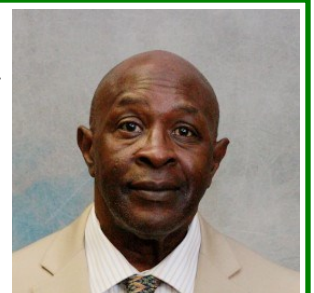
Save the date **April 20** for PCHAS's special fundraising luncheon that will showcase the life-changing work that they are doing in our community. You will hear inspiring stories from the staff and the families they care for. Their theme this year is "Hope Grows Here". Contact Marla Endieveri at 832.241.5921 or marla.endieveri@pchas.org for details.

To read the latest newsletter from PCHAS go to:

<https://www.pchas.org/news-and-events>

Do you need help cleaning your flower beds, washing your windows, or moving boxes? Governor Frazier is very good with odd jobs around your home. He accepts whatever you are willing to pay him. Not sure how much? Consider that minimum wage is less than \$10 and adding gas money depending on the distance to you home.

You can call Governor at 281-455-5013 to make arrangements.



JOIN US FOR ST. PHILIP PRESBYTERIAN WOMEN'S RETREAT



ENJOY YOUR
FORGIVENESS

ST. PHILIP PRESBYTERIAN
WOMEN'S RETREAT
MARCH 24 - 26

ALL WOMEN ARE WELCOME!

Bring a friend!

RETREAT LEADER: REV. KALLIE PITCOCK

Kallie Pitcock is a native of Graham, Texas, an Ole Miss Rebel, Mississippi State Bulldog, (yes, she knows they are rivals) and graduate of Austin Presbyterian Theological Seminary Class of 2020. Kallie is a lifelong Presbyterian, having grown up in First Presbyterian Church of Graham, Texas. Kallie is married to her friend since childhood, Justin. Together they have three children: Karper, Sophia, and Fletcher. Kallie and Justin's hearts have always been toward small-town life and service. Central to her call is to love and serve the Church as Christ loves. She is overjoyed for the opportunity serve alongside the loving congregation of Westminster Presbyterian Church in Nacogdoches, Texas. Prior to serving at Westminster, Kallie served as pastoral resident at St. Philip Presbyterian Church from 2020-2021.

Where:

Fairfield Inn & Suites Houston Memorial City Area
11080 Katy Frwy., Houston, TX 77043

Registration deadline is February 28—[Register Here](#)

Cost

- One of two sharing a room with 2 queen beds for 2 nights - \$225
- Single room with 1 king bed for 2 nights - \$345
- Single room for 1 night - \$225 - Friday Night Only
- Single room for 1 night - \$225 - Saturday Night Only
- Saturday Daytime Only - \$105
 - ◆ All meals are included if you are staying at the hotel - 2 dinners*, 2 breakfasts, 1 lunch
 - *Friday dinner - bring a salad ingredient to go with the take-out pizza.
 - ◆ Friday night only includes Friday dinner, Saturday breakfast and lunch.
 - ◆ Saturday night only includes Saturday lunch and dinner and Sunday breakfast.
 - ◆ Saturday Daytime Only registration includes lunch and dinner.

If you are paying by check, please put "PW Retreat" in the memo and send check to St. Philip PC, 4807 San Felipe, Houston, TX 77056.

"What to bring" and further information will be sent via email two weeks prior to the retreat.

IMPORTANT - No refunds can be made after March 3 and rooms not paid by that date will be cancelled. If you do not cancel your reservation, you must pay for your room whether you go or not.

If you have questions, contact Anne Wilson at anne.aiko.wilson@gmail.com or 713-416-8836.

If you have trouble with registration, call the church office at 713-622-4807 and ask for Lorrie Castle or email her at: lorrie@saintphilip.net.

If you would like to make a donation to the PW scholarship fund, you can do that after registering for the retreat.

MUSIC AT ST. PHILIP

COME MAKE MUSIC WITH US!

We're expanding, and we have a place for you!



Children's Choir • Open to all children & youth, age 6 and above

SUNDAYS at 9:00 a.m. **beginning FEBRUARY 19**

Got kids that love music? The St. Philip Children's Choir returns! After a long pandemic break, we're back. Children and youth will join for six Sunday morning rehearsals, then lead the Introit in worship on **Palm Sunday, April 2**. Parents, watch your email for more info coming soon!

CONTACT Randall Swanson — randall@saintphilip.net



St. Philip Choir • Open to all singers, college age and above

SUNDAYS at 10:00 a.m. **and WEDNESDAYS** at 7:00 p.m.

Do you love to sing? Become a St. Philip Choir member! Sing great choral music with others who also love singing. Elevate your mood by singing in a group. Enhance your prayer life and gain musical knowledge. Enjoy the best seats in the house!

CONTACT Randall Swanson — randall@saintphilip.net



Bell Canto Handbell Choir • Open to all interested ringers

Second & Fourth SUNDAYS of each month at 9:30 a.m.

Wanna make a joyful noise? Looking for a way to get involved without too much of a time commitment? Come ring with us twice a month! Not sure how to ring a handbell? We'll teach you! (it's easy) Some prior music reading experience is helpful — this is a very fun group!

CONTACT Jane Malczewskyj — janemalc46@sbcglobal.net

ST. PHILIP PRESBYTERIAN CHURCH
4807 San Felipe Street • Houston, Texas

FOLLOW US ONLINE
Music at St Philip



IN OUR PRAYERS

Florence McKelvey and family upon the death of her husband Gene McKelvey on February 3. A memorial service is scheduled February 25 at 2:00 p.m. in the Sanctuary.

Anne Wilson and family upon the death of her mother Marion Takehara on February 4. Memorial service details are pending.

Fairfax Fair and family upon the death of her father Sam Fullerton who died January 28.

Carlton Currie and family upon the death of his brother-in-law Ritchie Williams who died in January.

St. Philippians and their families – Jacqueline & Bill Taylor; Peg Palisin; Dan Cleveland; CJ Miller; Beverly Hudson; Susan Huffman; Mary Sinderson; Eleanor Grant; Judy Nunn; Molly Boren-Whitney; Carolyn Vestal; Lane Fletcher; Austin Lippincott; Richard Johnson; Don Padgett; Steve Adger; Judith Crane; Mezgebe Gebray; John Palisin – brother of Peg Palisin; John Murphy, Sr. – cousin of Gary Gardner; Martine Marte Wood – daughter-in-law of Ruena Wood; Carla Burns – cousin of Sharon Webb; Betsy Johnson – mother of Pat Lindsay; Robert Kirtley – father of Amanda Kirtley; Jann Everhart – sister-in-law of Nancy Everhart Johnson; Warren Cash – brother of Kay Cash; Ann Perenyi – mother of Lad Perenyi; Donna Harris – sister of Joyce Fugit; Alma Fonseca – mother of Angelina Fonseca; Darryl Cazes – brother of Pam Taylor; Ann Perkins Cloud – cousin of Stephen Paine; Carol Paine Kendrick – sister of Stephen Paine; John Anderson – brother of Tom Anderson; Mac Wilson – father of Butch Wilson; Shirley Boggus – grandmother of Omi Ford; Alan Rowe – father of William Rowe; and Elizabeth Carlton Lithio – granddaughter of Jeanie Flowers.

Homebound – Elizabeth Arp; John Bobbitt; George Helland; Arlette Keene; Ellen MacDonald; Jean Nelson; Joyce Randolph; George and Lorraine Scott; Sondra Sullivan; and Jody Tomforde.

Friends of St. Philippians – Brad McWilliams; Carol Gilliland - friend of Orlean Anderson; Betsy Shear Lewis – friend of Laney Miller; Shirley Stubblefield – friend of Barbara Runge; Clayton Amacker – friend of Peg Palisin and Gary Gardner.

If you have a pastoral care need or a prayer request you would like to share, please email deacons@saintphilip.net.

CONTRIBUTIONS

Pledge payments, communion gifts and other gifts to support the Church can be made anytime through our website (<http://saintphilip.net/>), text “SPPC” to 73256 and follow the prompts, or sent to the Church Office at 4807 San Felipe, Houston, TX 77056.

Next edition: February 21; Deadline February 16—3:00 p.m.

Stay connected with regular emails from the pastors until then.

If you have any comments or suggestions for the Philip-Eye, please send them to: philipeye@saintphilip.net or call 713-622-4807 and ask for Lorrie.



MORE LIGHT
PRESBYTERIANS



4807 San Felipe, Houston, TX 77056

Phone: 713.622.4807 Fax: 713.622.5405 www.saintphilip.net