

PHILIP-EYE

Duerr Lecture Series



Rev. Dr. John W. Wurster
Pastor, Head of Staff

Rev. Keatan King
Associate Pastor

Rev. Omar Rouchon
Associate Pastor

Dr. Randall Swanson
Director of Music

Dr. Matthew Dirst
Organist

Cecy Duarte
Children's Music Associate

Micah Meyers
Art Director

Wilbert Parada
Facilities Supervisor

Dimas Parada
Custodian

Denise Ferrell
Bookkeeper

Lorrie Castle
Office Manager
Newsletter Editor

Susan Estill
Editor Emerita

"WHO IS JESUS CHRIST FOR US TODAY?"

An engaging and sought-after speaker and teacher, Rachel Baard will be the leader for the 26th annual Duerr Lecture Series as she examines the question "Who is Jesus Christ for us Today?" in a three part series on themes of history, confession, and hope.

The Christian Church has spent the last 2,000 years answering Jesus' question to his disciples, "who do you say that I am?" In fact, this question is at the heart of everything the church is and everything the church does. Time and time again theologians have asked the question with great urgency. For example, the question, "who is Jesus Christ for us today?" was central to Dietrich Bonhoeffer's sense of theological urgency in Nazi Germany, to James Cone's development of Black Theology, to the work of theologians drafting the Belhar Confession in South Africa, and more. This question is not as easy to answer as it might seem.

Who was Jesus Christ? The foundational confession of the Christian Church is that "Jesus Christ is Lord." What does it mean for the Christian faith to confess that God is One, and also that Jesus is One with God?

Who is Jesus Christ? Three major shifts have shaped the contemporary conversation on Jesus Christ: secularism, colonialism, and the Holocaust.

The Western world, and with it the Christian Church, expanded across the world, shifting the cultural landscape of the church, but also creating ethical challenges associated with colonialism and slavery. In the 20th century, the Holocaust brought to stark relief problematic Christian ideas on Judaism, calling forth serious self-examination by Christians.

Who will Jesus Christ Be? The Christian landscape is changing rapidly, and with it the confession of Jesus Christ. What can Christians in the increasingly unchurched West learn from churches in the Global South, in Asia, in communities in Latin America, the anti-apartheid church in South Africa and other communities about the ethics of Jesus? How can we locate our own understanding of Jesus Christ as Lord of our lives within this rich conversation?

Rachel Baard is a graduate of University of Stellenbosch, South Africa (B.A., Law; B.

Th., M. Th. (Theological Ethics), and Princeton Theological Seminary Ph.D. (Systematic Theology). After teaching at Villanova University from 2004 -2019, she joined the faculty of Union Presbyterian Seminary in July, 2019 as Assistant Professor of Theology and Ethics. Since 2021 she has served as Director of the Master of Arts in Public Theology Program, and she is in the ordination track with the Presbyterian Church (USA). Her first book *Sexism and Sin-Talk: Feminist Conversations on the Human Condition* (Westminster John Knox, 2019), which examines various perspectives on the doctrine of sin, was awarded the Andrew Murray/Desmond Tutu Book Prize. In demand as a speaker, Dr. Baard has given numerous scholarly presentations at Princeton Theological Seminary and for the American Academy of Religion, and in South Africa for various academic and spiritual organizations.

Growing up in South Africa, Dr. Baard was strongly influenced by her mother who hated apartheid on religious grounds. That shaped Rachel's life and contributed to her political activism in the late 80s/early 90s when she was a university student. Rachel is married and has a daughter. When time permits she loves quilting and reading.

In its 26th year the Duerr Lecture Series continues to offer the lectures both live and by live-streaming. Access to the worship service and lectures is available on the website: www.saintphilip.net. A link will be found to register for either in-person or online live-streaming. All lectures are free and open to all.

Worship service is 11:00 a.m. CST, Feb. 26, lectures each evening, Feb. 26, 27, & 28, are at 7:00 pm. All lectures will be held in the Fellowship Hall and will be archived for later viewing. For specific questions about registering please contact duerrlectureseries@gmail.com.

The lecture series was established in 1998 in memory of Chris Duerr, with the purpose of bringing the best Reformed scholars and preachers to St. Philip and the wider community each year. Duerr was born and raised in Germany, growing up during the years of World War II. He came to the U.S. in 1950 in the first class of Fulbright Scholars from Germany, studying at Michigan State University. He also studied at the University of Hamburg, Germany, where he received the equivalent of a Master's Degree in political economics. He moved permanently to the States in 1968, becoming a naturalized citizen in 1973. He joined St. Philip in 1979 and later served as a ruling elder.

The Lecture Series was established through generous contributions made in Duerr's memory. While the lectures are free and open to everyone, your gift to ensure the continuation of the series on an annual basis is greatly appreciated. Gifts may be made to the series in honor of or in memory of a friend or loved one. Gifts may be made by check or on the website: www.saintphilip.net.

BROWN BAG LUNCH—Join Dr. Rachel Baard for the informal Brown Bag Lunch on Monday, **February 27**, at Noon in the Dining Room. This is a great opportunity to get to know the speaker and ask questions about any subject. Bring your own lunch, drinks are provided. The tables will be arranged in a large open square so there can be comfortable conversation. The lunch concludes at 1:00 p.m.

LENT AT ST. PHILIP

The season of Lent begins with Ash Wednesday on **February 22**. Ash Wednesday services will be at 12 noon and 6:30 p.m. Lunch will be available in the Gathering Area following the noon service. The noon service will be live-streamed.

For all the Wednesdays in March, we will have mid-week services at 12 noon, in-person and livestreamed. Guest preachers from across the area will lead us in worship. This year's theme is "How Can I Keep from Singing?" Each preacher is selecting a favorite hymn, connecting it to a scripture passage, and then preparing a sermon. Lunch will be available after the service in the Gathering Area.

Again this Lent, John Wurster will offer daily e-votions. These brief biblical reflections are sent each morning via e-mail. If you have received e-votions in the past, you are already subscribed for this year. If you'd like to join the e-votions list, send an e-mail to john@saintphilip.net.

WORSHIP SCHEDULE CHANGING

Beginning on **February 26** and continuing at least through the season of Lent, there will be a single Sunday worship service at 11:00 a.m. During these weeks, as the Session considers the longer term viability of the 9:00 a.m. service, your comments are welcome and appreciated.

PRIMETIMERS

Join the Primetimers on **Thursday, March 30**, for a visit to the George H.W. Bush Presidential Library and Museum in College Station, for a tour of *Mandela: The Official Exhibition*. From the museum website: *Mandela: The Official Exhibition is the major new global exhibition that explores the life of one of the world's most famous freedom fighters and political leaders. The epic story of Nelson Mandela is told in a series of experiential galleries from his rural childhood home through years of turbulent struggle against the apartheid regime, to his eventual vindication and final years as South Africa's first democratically elected president.*

We will depart from the church parking lot at 8:30 and will be back by 3:30. After visiting the museum, we'll have lunch at Stella Southern Cafe. The cost is \$8/person and lunch will be on your own. **Please RSVP by Monday, March 6** to secure your spot. Payment can be made with cash the day of or online at Saintphilip.net under contributions choose 'Primetimers' fund. You may contact Omar with any questions.

WEEKLY OPPORTUNITIES

MIDWEEK BIBLE STUDY—Wednesday Bible study with John Wurster **meets weekly**. The class meets at 9:30 a.m., and is a hybrid format with an in-person option in the Office Conference Room and also a Zoom option. To get on the list for the Zoom links, send a note to john@saintphilip.net. Bible novices, Bible experts, and everyone in between is welcome!

WOMEN'S MONTHLY BOOK CLUB—This self-led, interactive group produces lively discussions and wonderful fellowship. The next meeting is **Mar. 9** we will discuss *South to America: A Journey Below the Mason-Dixon to Understand the Soul of A Nation* by Imani Perry. Watch your email for details of the next meeting. If you have any questions or concerns, please contact Nina Lambright at:

nnl@lambrightlaw.com.

PRESBYTERIAN MEN'S WEEKLY FELLOWSHIP

Men of all ages are welcome to participate in this self-led group. The Men's Weekly Fellowship meets each Friday **in person in the office conference room and via Zoom at 11:45 a.m.** If you would like to join them, please contact Gary Gardner at: ggardne148@aol.com.

LAMBETH STUDY—Keatan King leads young adults in study every Monday evening at 7:00 p.m. via Zoom. It is a time of study, reflection, and prayer. If you would like more details, email Keatan King at:

keatan@saintphilip.net.

PRESBYTERIAN WOMEN BIBLE STUDY—All women of the church are invited to join any of the meetings of Presbyterian Women. If you are not a member of a circle, you are welcome to participate; to be directed to a group leader please email welcome@saintphilip.net. All circles meet in the Dining Room in the Administration Building.

Monday Morning Saints—Second Monday of each month @10 a.m.

Sunday Circle—Third Sunday of each month @ 12:30 p.m.

Thursday Evening Circle—First Thursday of each month @ 7 p.m.

In celebration of your caring,

Sue Shirley-Howard and Jane Cooper

invite you for lunch

on **March 1 at 11:45 a.m.**

at The Hallmark, 4718 Hallmark Drive.

There are several caveats for attending.

The rules:

- 1 - you must RSVP by **February 27** by texting or calling 713-683-8139 (Sue Shirley-Howard).
- 2 - you have knitted at least one hat for the Seafarers over the years.
- 3 - you have thought about knitting a hat for the Seafarers by purchasing a new one (no time like the present - we can store it for you).
- 4 - you donated yarn to the Arts & Crafts room over the years which our knitters have used for the hats.
- 5 - you have helped organize the drive-by delivery.
- 6 - you are available to arrive by 11:45 a.m. on Wednesday, **March 1**, with your driver's license.
- 7 - there is a limited number of seats so the earlier you RSVP assures you a place.
- 8 - lunch will be over at 1:00 p.m.

We wish to thank everyone especially
Jennifer Wilson, Hope Wilmarth,
Caryn and Russell Bahruth.



Do you need help cleaning your flower beds, washing your windows, or moving boxes? Governor Frazier is very good with odd jobs around your home. He accepts whatever you are willing to pay him. Not sure how much? Consider that minimum wage is less than \$10 and adding gas money depending on the distance to your home. You can call Governor at 281-455-5013 to make arrangements.

ST. PHILIP VBS ~ LENT 2023

WALKING TOGETHER



VACATION BIBLE SCHOOL

ALL CHILDREN AGES 3 - 5TH GRADE ARE WELCOMED > **THERE IS NO COST**

ST. PHILIP PRESBYTERIAN CHURCH - 4807 SAN FELIPE - EDUCATION BLDG.

&

WEAR CLOSED-TOE
SHOES



* PLEASE BRING
A BAGGED LUNCH



FEBRUARY

SATURDAY
9 AM - 2 PM

25TH

MO-RANCH RETREAT—JUNE 1-4

Registration for the annual Mo-Ranch Retreat (June 1-4) is open, please click on the link below to register.

Join us for a long weekend of fellowship at Mo-Ranch in the beautiful Texas Hill Country, where we'll pray, play, and relax together as a church family. This year's event begins after supper on Thursday (must purchase dinner in advance during registration) and continues through worship on Sunday morning.

Our featured speaker is Rev. Gini Norris-Lane. A gifted and creative speaker and teacher, Gini is engaged with Presbyterian campus ministry across the country as the executive director of UKirk. She also serves as pastor at First Presbyterian Church in Uvalde. Gini was a pastoral intern at St. Philip in the late 1990's.

MO-RANCH—Registration for the annual Mo-Ranch Retreat on June 1-4 is available in the Gathering Area after worship service today or you can visit: saintphilip.net

You may pay in full at the time of registration or in three installments (February 24, March 31, April 28). Confirmations and bills will be sent out by email. (Please be sure that the email you provide is correct and is an address you check regularly.) All registrations must be complete and paid by February 24, 2023. (First payment, if paying in installments.) No refunds can be made after March 31. If you do not cancel your reservation by that date, you must pay for your room whether you go or not.

WE REGRET WE CANNOT HOLD SPACE FOR ANYONE WITHOUT A COMPLETED REGISTRATION.

PRICING:

Pricing for a room in Wynne, Flato, or Pheasant Run lodge depends on how many adults will share the room. Prices for adults include lodging and all meals from breakfast Friday through breakfast Sunday. Children and youth are billed only for their meals (but must be accompanied by at least one adult per room).

If you wish to have Thursday dinner at Mo-Ranch, you must select that separately. Cost: Adults and Youth \$17; Children (ages 4-11) \$12.

WYNNE LODGE/FLATO LODGE

(each room has two queen beds)

Adult (single accommodation): \$528

Adult (room shared by 2 adults): \$310 each

Adult (room shared by 3 adults): \$238 each

Adult (room shared by 4 adults): \$201 each

Youth 12-18 in same room: \$93 per child

Children 4-11: \$68 per child



PHEASANT RUN

(most rooms have two beds)

Adult (single accommodation): \$498

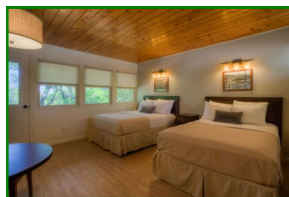
Adult (room shared by 2 adults): \$295 each

Adult (room shared by 3 adults): \$228 each

Adult (room shared by 4 adults): \$194 each

Youth 12-18 in same room: \$93 per child

Children 4-11: \$68 per child



PAYMENT:

At the end of the online registration process, you will be asked to *select payment amount*: Pay total amount; Pay minimum Payment; or Enter an Amount. Enter what you are able to pay at this time. The next option is to *select payment method*.

If you are setting up a payment plan, you will choose the option to Pay In Person/Mail.—Indicate Payments Plan in the memo box. You may then make payments in the office or sign in to MyStPhilip and make payments to the Mo-Ranch Fund on February 24, March 31, and April 28.

Click here to reserve your spot:

MO-Ranch Registration

Never been and would like to know more, committee members will be in the Gathering Area Sunday before and after the 11:00 a.m. worship service.

Committee members planning an adventure for you at Mo-Ranch include: Melissa Aldrich, Deb Burks, Ada Fuller, Judith Hiott, John Lemen, Ruthie Waldrop, and Amye Webster.

OPPORTUNITIES FOR LEARNING

NURSERY CARE IS AVAILABLE THROUGHOUT SUNDAY MORNINGS

8:30 a.m.—12:30 p.m. Infants to age 4 are invited to our Nursery which is staffed by professional childcare providers. Please find our Nursery in Room 106 of the Education Building along the Sunday School Classroom hallway on the first floor. An usher or a greeter will be happy to direct you there.

SUNDAY SCHOOL CLASSES FOR ALL AGES

GODLY PLAY (Age 3-Kindergarten) – Room 104—Our preschool class uses a curriculum called “Godly Play,” developed by Jerome Berryman in Houston, and utilized in reformed churches all over the world. Godly Play encourages children to use the language of Christians and multiple senses to express what they innately know about God.

ELEMENTARY (Grades 1-5) — Room 105

YOUTH (Grades 6-12) — Room 205

Both the Elementary and Youth classes use the PCUSA’s new *Follow Me* curriculum. These lessons are based on 36 practices that Jesus engaged in and taught his followers about. Learners will locate these practices in scripture, while engaging in conversation about the practices in their daily lives. With a wide variety of developmentally-aligned activities, conversation starters, and questions to ponder outside of class, this curriculum calls us all to follow Jesus and live out his example every day.

CHILDREN'S CHOIR (ages 6 and up) - Admin Buldg. —Room 201 - meets Sunday mornings at 9:00 a.m. to continue through **April 2**. They will sing the Introit at our 11:00 a.m. worship service on Palm Sunday. Come join this fun group and bring your friends! Our new director, Miss Eliza, is full of surprises!!

ADULT BIBLE STUDY—Room 204—We are continuing our study of the Kingdoms of Israel and Judah in 2 Kings with the story of Elisha and the fate of Jezebel in Dr. Robert Alter’s *Ancient Israel, The Former Prophets* (2013). Join us from **9:30 a.m. – 10:40 a.m.** to deepen our understanding of God’s faithfulness to God’s people from Dr. Alter’s translation and commentary on the Biblical Hebrew. All are welcome.

CHURCH & SOCIETY – Room 201—Church and Society regularly features speakers and presentations on a variety of contemporary and historical matters of faith and practice. This class meets from 9:40 a.m.-10:45 a.m. with presentations in person and some by Zoom, projected in the classroom. Email Mickey Meyers if you would like to join any of the classes: churchsociety_stphilip@comcast.net.

February 26 - St. Philip Mission Partner Presbyterian Children’s Home and Services - Foster Care for Children in Crisis - Because of a lack of licensed suitable placements

for foster children, Texas sent an average of 38 children to out-of-state facilities every month from January through October, 2021 at a cost of \$2.9 million. What is the church doing to respond to the critical needs of foster children in Texas? Presbyterian Children’s Homes and Services provides Christ-centered care and support of children and families in need. PCHAS helps children heal from trauma so they can build healthy relationships, succeed in education and discover their own world of opportunities and possibilities. Learn how PCHAS supports foster and adoptive families to be a safe, loving, nurturing family, where children heal through connection and can grow to their potential. Presented by Laura Fleming - Senior Development Officer - Presbyterian Children’s Homes and Services. **March 5** - Healthy Marriages - Healthy Families-Healthy Communities - Presented by Judge Bonnie Hellums - serving as visiting judge to the Supreme Court of Texas Permanent Judicial Commission on Children, Youth and Families as a Commissioner.

SPa (St. Philip Adults) – Room 200—This year, SPa returns to its same place and time. We use the adult resources from the new *Follow Me* curriculum to guide our informal weekly discussion about biblical practices such as hospitality, forgiveness and honoring sabbath. All adults of any age are welcomed to participate - grab some coffee and join us. There is no need to prepare or purchase materials for class, so come as you are able!

CHILDREN'S CHAPEL In the Children's Chapel, our young disciples learn the whos, whats, wheres, whens and whys of worship in the chapel, while also praying, seeing and hearing God's word at an age-appropriate level. Children return to join the congregation in the first few pews on the lectern side of the church for the last hymn. This will resume on **February 26** and continues every 2nd and 4th Sunday during the 11 o'clock service.



Pictures in this edition are from Second Sunday activities on February 12.

Credit: Betsy Boston



PUT AN END TO PERIOD POVERTY AND THE STIGMA THAT SURROUNDS PERIODS

Saturday, March 4, 11:00 a.m. - 1:00 p.m.

Dining Room at St. Philip

Please join Caroline Vestal, member of St. Philip and Junior at Bellaire High School, for her Girl Scout Gold Award Event.

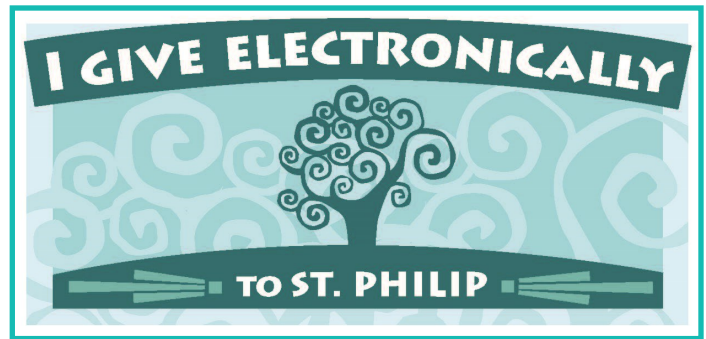


Through a fun event, Caroline is addressing period poverty, which refers to the inadequate access to menstrual education and hygiene products, including but not limited to sanitary products and waste management. The cost of sanitary products as well as access to affordable products leads to exclusion for girls from so many activities ranging from playing sports to attending school (this occurs in many areas of our country as well as many 3rd world countries). Research also shows that in communities shaped by repressive systems, as well as our own community, menstruating is too often viewed as an uncomfortable subject that comes with shame and embarrassment. Through education and advocacy she is hoping to help improve access to these hygiene products and show the world that periods are not only a natural process that all women and girls in the world share, but also important to humanity.

The event will be held here at the church on Saturday, March 4 from 11 am - 1 pm. The event will include more information about the topic as well as the 2 organizations she is supporting (**Star of Hope Homeless Shelter & www.lightingthepath.org/services/girls-for-girls-project**). There will be opportunities to sew reusable pads, cut fabric to prepare DIY sew packs to make reusable pads at home, make cute bracelets for awareness, watch a short film about this global issue, and enjoy light snacks and drinks!

All are welcome! (Yes, guys too!) Pre-teen and teen girls are highly encouraged to attend. Bring your friends and neighbors! **Registration is available online at:** <https://www.signupgenius.com/go/60B0A4DAFAA2FAAF49-putanend>

I want to thank all who made it possible to greet our friends at the reception after Don's memorial service in the Gathering Area. I am grateful for all your prayers, cards and concern you have shown through Don's illness and following. It's wonderful to be embraced by the St. Philip family.
Janet Davis



While placing money in the offering plate on Sunday is a means of giving to the church that still works for many people. Yet electronic payments processed through the church website and electronic payments directed by givers through their own banks represent a substantial portion of the church's receipts. Though faithful and significant, these electronic payments aren't seen in the Sunday offering plate, we'd like to change that! In response to parents' hopes that their children might be able to see their ongoing commitment to St. Philip and with the intent to better represent the totality of our giving as a congregation, we have available in the pews giving cards that can be placed in the offering plate by our electronic givers.

**CONTRIBUTIONS, PLEDGE PAYMENTS, COMMUNION GIFTS
& OTHER DONATIONS TO SUPPORT THE CHURCH CAN BE MADE ANYTIME.**

WAYS TO GIVE



scan QR code



website

visit: SaintPhilip.net



text

- send text to: 732-56
- with text message: SPPC

MAKE A CONTRIBUTION



PRESBYTERIAN WOMEN'S RETREAT MARCH 24-26

ALL WOMEN ARE WELCOME! Bring a friend!

RETREAT LEADER: REV. KALLIE PITCOCK

Kallie Pitcock is a native of Graham, Texas, an Ole Miss Rebel, Mississippi State Bulldog, (yes, she knows they are rivals) and graduate of Austin Presbyterian Theological Seminary Class of 2020. Kallie is a lifelong Presbyterian, having grown up in First Presbyterian Church of Graham, Texas. Kallie is married to her friend since childhood, Justin. Together they have three children: Karper, Sophia, and Fletcher. Kallie and Justin's hearts have always been toward small-town life and service. Central to her call is to love and serve the Church as Christ loves. She is overjoyed for the opportunity serve alongside the loving congregation of Westminster Presbyterian Church in Nacogdoches. Prior to serving at Westminster, Kallie served as pastoral resident at St. Philip from 2020-2021.

Where: Fairfield Inn & Suites (Memorial City)

11080 Katy Frwy., Houston, TX 77043

Registration deadline is February 28—[Register Here](#)

Cost

- One of two sharing a room with 2 queen beds for 2 nights - \$225
- Single room with 1 king bed for 2 nights - \$345
- Single room for 1 night - \$225 - Friday Night Only
- Single room for 1 night - \$225 - Saturday Night Only
- Saturday Daytime Only - \$105
 - ♦ All meals are included if you are staying at the hotel - 2 dinners*, 2 breakfasts, 1 lunch
 - *Fri. dinner - bring a salad ingredient to go with take-out pizza.
 - ♦ Fri. night only includes Fri. dinner, Sat. breakfast & lunch.
 - ♦ Sat. night only includes Sat. lunch & dinner and Sun. breakfast.
 - ♦ Sat. Daytime Only includes lunch and dinner.

If you are paying by check, please put "PW Retreat" in the memo and send check to St. Philip PC, 4807 San Felipe, Houston, TX 77056.

"What to bring" and further information will be sent via email two weeks prior to the retreat.

IMPORTANT - No refunds can be made after **March 3** and rooms not paid by that date will be cancelled. If you do not cancel your reservation, you must pay for your room whether you go or not.

If you have questions, contact Anne Wilson at anne.aiko.wilson@gmail.com or 713-416-8836.

If you have trouble with registration, call the church office at 713-622-4807 and ask for Lorrie Castle or email her at: lorrie@saintphilip.net.

If you would like to make a donation to the PW scholarship fund, you can do that after registering for the retreat.



MARCH BIRTHDAYS

WHO	DATE
Kathy Lippincott	1
Tristan Newport	3
Brian Webster	3
Butch Wilson	4
Amy Frautschi	6
Craig Hill	6
Joe Harwood	7
Tom Anderson	8
Christopher Newport	10
Leonardo Stevenson	12
Bennett Pepi	14
Cohen Carlin	15
Marcia James	15
Kate Burkart	16
Nancy Johnson	16
Melissa Aldrich	17
Jennifer Flowers	17
Bob Ardell	18
Krystal Davis	18
Dan Flowers	18
Susan Huffman	20
Isabella Ford	24
Sadie Fair	25
James Lewis	25
Emily Estill	26
Paxton Lambright	26
Diana Fields	27
Sue Mitchell	28
Jacqueline Taylor	28
Sherri Dees	29
Linda Ewing	29
Jay Jeanes	29
Brandon Brown	30
Calum Gensch	30
Jane Lee	30
Robin Angly	31
Ruth Ewing	31
Jean Nelson	31



WHAT IS A MATTHEW 25 CHURCH?

Matthew 25, besides being a well-known Biblical passage about “the judgment of the nations,” is a denominational initiative of the Presbyterian Church (USA) that asks churches to focus on one or more of the following areas:

- Building congregational vitality
- Dismantling structural racism
- Eradicating systemic poverty

St. Philip’s Peacemaking and Social Justice Committee voted to recommend, and Session has approved, that St. Philip become a Matthew 25 Church with an emphasis on dismantling structural racism.

Matthew 25 got its start when the 2016 and 2018 General Assemblies of the PC(USA) urged the denomination to see our neighbors through Jesus’ eyes and care for and serve those who are marginalized or in need -- people who are hungry, thirsty, naked, sick, imprisoned, strangers, poor, oppressed in other ways, or in need of welcoming.

Passion without a path is pointless, and the *Matthew 25* vision unites all Presbyterians in work that is a direct response to the good news of Jesus and a faithful expression of what it means to be Christ’s disciples in this time and place. *Matthew 25* creates a spark to energize us and join us in a common mission.

Watch this space for more information, including news of an upcoming table in the Gathering Area (with freebies!) and the story behind the Matthew 25 logo.

GUNS IN THE HOME: KEEPING KIDS SAFE

The American Academy of Pediatrics (AAP) has a great resource, [Guns in the Home: Keeping Kids Safe](#), available on its website, for guidance in reducing the gun violence threat to our children. Although the information is focused on children, it is equally applicable to teens.

The Peacemaking and Social Justice Committee thanks St. Philip’s own Dr. Julieana Nichols for bringing this resource to our attention during her recent presentation to Church and Society. That class recording is available to view at [Church & Society Presentations on Vimeo](#) (Feb-5) if you are interested in the work the AAP is doing around the issue of gun violence.

SOCIAL JUSTICE STUDY GROUP

On our next regular meeting date, **March 7** (the first Tuesday) we conclude our discussion of Kerry Connelly’s book *Good White Racist?* From 7:00 to 8:00 p.m., we will consider chapters 9, 10, and 11. We meet by Zoom. (To join us, just email welcome@saintphilip.net with PSJ in the subject line.) Outlines and action items follow below.

Chapter 9, “The consumption of bodies (Or “Step away from the hair”)

- Because everything is ours
- The doctrine of dominion
- You’re cool because of your Black friend
- On friends and comrades

Learn: Research some of the historically Black neighborhoods in your area. Can you identify times in their history that they were consumed by whiteness?

Think: Have you ever used products, enjoyed entertainment, or embraced fashion choices that appropriate the cultures of BIPoC communities? Have you ever used a relationship with a member of the BIPoC community to justify yourself or to absolve yourself of racism?

Act: When interacting with a person of color, don’t assume relationality. This could mean assuming that someone feels safe with you before knowing you, wants relationship with you just because that’s what you want, or knows you’re an ally before you’ve acted like one. Wait to be invited into relationship and understand that trust needs to be earned.

Chapter 10, “Shiny happy people (Or ‘When good white racists go to church’)

- The most evil tithe
- Charity + justice, mercy + missions
- Here is where the hope is
- Repentance Road

Learn: What does your faith community do to combat racism, if anything?

Think: How are modern-day faith communities complicit in racism? In your understanding of God, how does God want faith communities to respond, collectively, to systemic racism?

Act: If necessary, be the one bold enough to speak out about racism—or the lack of antiracist activity—in your faith community.

Chapter 11, “In full color (Or, ‘Where we go from here’)”

White awakening and the stages of grief

- Denial
- Anger
- Bargaining
- Depression
- Acceptance
- Finding meaning

- What we have to do: Three levels of true antiracism work
 - Personal
 - Interpersonal
 - Collective
 - Action steps
- New imaginations

IN OUR PRAYERS

Florence McKelvey and family upon the death of her husband Gene McKelvey on February 3. A memorial service is scheduled February 25 at 2:00 p.m. in the Sanctuary.

Anne Wilson and family upon the death of her mother Marion Takehara on February 4. A memorial service is scheduled for March 18 at 2:00 p.m. in the Sanctuary.

St. Philippians and their families—Beverly Baker; Gary Whitney; Peg Palisin; Dan Cleveland; CJ Miller; Beverly Hudson; Susan Huffman; Mary Sinderson; Eleanor Grant; Judy Nunn; Molly Boren-Whitney; Carolyn Vestal; Lane Fletcher; Austin Lippincott; Richard Johnson; Don Padgett; Steve Adger; Judith Crane; Arlette Keene; Mezgebe Gebray; John Palisin – brother of Peg Palisin; John Murphy, Sr. – cousin of Gary Gardner; Martine Marte Wood – daughter-in-law of Ruena Wood; Carla Burns – cousin of Sharon Webb; Betsy Johnson – mother of Pat Lindsay; Robert Kirtley – father of Amanda Kirtley; Susan Everhart – niece of Nancy Everhart Johnson; Warren Cash – brother of Kay Cash; Ann Perenyi – mother of Lad Perenyi; Donna Harris—sister of Joyce Fugit; Alma Fonseca – mother of Angelina Fonseca; Darryl Cazes—brother of Pam Taylor; Ann Perkins Cloud—cousin of Stephen Paine; Carol Paine Kendrick—sister of Stephen Paine; John Anderson—brother of Tom Anderson; Mac Wilson—father of Butch Wilson; Shirley Boggus—grandmother of Omi Ford; Alan Rowe—father of William Rowe; and Elizabeth Carlton Lithio—granddaughter of Jeanie Flowers.

Homebound—Elizabeth Arp; John Bobbitt; George Helland; Ellen MacDonald; Jean Nelson; Joyce Randolph; George and Lorraine Scott; Sondra Sullivan; and Jody Tomforde.

Friends of St. Philippians— Brad McWilliams; Carol Gilliland - friend of Orlean Anderson; Betsy Shear Lewis – friend of Laney Miller; Shirley Stubblefield—friend of Barbara Runge; Clayton Amacker—friend of Peg Palisin and Gary Gardner.

If you have a pastoral care need or a prayer request you would like to share, please email deacons@saintphilip.net.

CONTRIBUTIONS

Pledge payments, communion gifts and other gifts to support the Church can be made anytime through our website (<http://saintphilip.net/>), text “SPPC” to 73256 and follow the prompts, or sent to the Church Office at 4807 San Felipe, Houston, TX 77056.

Next edition: March 7; Deadline March 2—3:00 p.m.

Stay connected with regular emails from the pastors until then.

If you have any comments or suggestions for the Philip-Eye, please send them to:
philipeye@saintphilip.net or call 713-622-4807 and ask for Lorrie.



MORE LIGHT
PRESBYTERIANS



4807 San Felipe, Houston, TX 77056

Phone: 713.622.4807 Fax: 713.622.5405 www.saintphilip.net